



Palmers Road, London, E2

BUTLER & STAG



Guide Price £475,000 - £500,000
Nestled in the heart of Bethnal Green, adjacent to the serene Mile End Park, lies this stunning, exceptionally large two-bedroom modern apartment within the highly sought-after Justines Place development. This share of freehold property offers an unparalleled blend of contemporary living and urban convenience, making it a true gem for discerning homeowners.



Leasehold - Share of

- 898 Sq/Ft Internal Living Space
- First Floor Apartment
- Two Bedrooms
- Bethnal Green and Mile End Tube Stations Close By
- Share Of Freehold
- Secure / Gated Development
- Mile End Park And Victoria Park On Your Door Step
- Chain Free

Boasting an impressive floor area (898 Sq/ft), this apartment offers an abundance of space rarely found in city living. The open-plan living and dining area is bathed in natural light, creating a welcoming ambiance.

The property features two generously sized bedrooms, each offering ample storage space and large windows that flood the rooms with light.

The bathroom features modern fittings, tiled walls and contemporary fixtures.

Justines Place is perfectly positioned for easy access to Mile End Park, providing a green oasis right at your doorstep. Bethnal Green's vibrant community, with its eclectic mix of cafes, restaurants, and shops, is just a short stroll away.

The apartment benefits from superb transport connections, with Mile End and Bethnal Green tube stations nearby, ensuring quick and easy commutes to the City and beyond.

As a share of freehold property, this apartment offers added security and peace of mind, with the assurance of shared ownership and control over the management of the building.

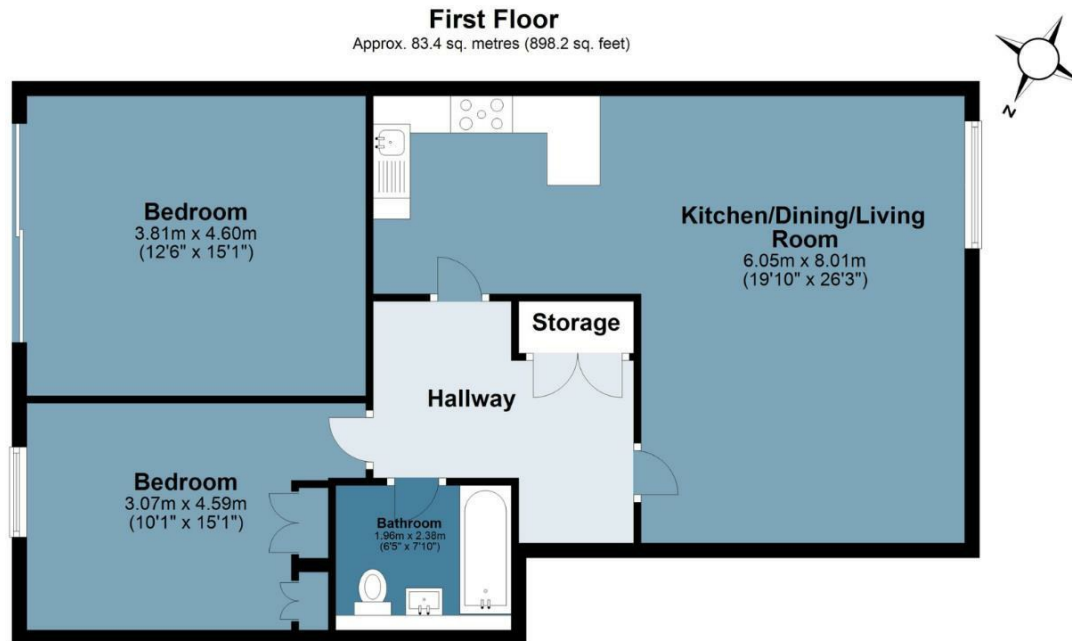




Justines Place

Approx. Gross Internal Area 83.4 sq. metres 898.2 sq. feet)

BUTLER & STAG



Measurements are approximate and for illustration purposes only. While we do not doubt the accuracy and completeness, we advise you conduct a careful independent assessment of the property to determine monetary value
© @modephotouk www.modephoto.co.uk

IMPORTANT NOTICE - These particulars have been prepared in good faith and they are not intended to constitute part of an offer or contract. We have not performed a structural survey on this property and the services, appliances and specific fittings have not been tested. All photographs, measurements, floor plans and distances referred to are given as a guide and should not be relied upon.

BUTLER & STAG

☎ 020 8102 1236

🏠 508 Roman Road, Bow, London, E3 5LU

✉ bow@butlerandstag.com

www.butlerandstag.uk